



Mini Excavators
XE55E



Rated Power: 31.2kw
Operating Weight: 5.7t
Standard Bucket Capacity: 0.16m³





High efficiency and upgraded performance

Complete power and versatility for various jobs

► A passion for performance

Combining the power for demanding jobs and the versatility to work in any condition, the XE55E is ready to take on any challenge. This advanced 5.7 tonnage machine is designed with excellent stability to work efficiently even where space is confined. Versatility is greatly enhanced with two auxiliary circuits as standard and precise oil flow control. With upgraded digging and lifting power and smoother travel performance, this XE55E truly has it all.

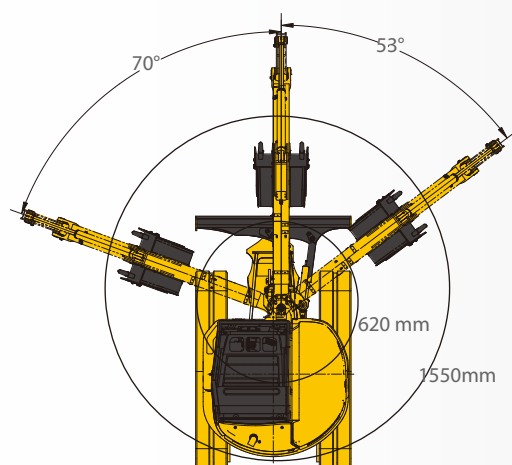
- Kubota V2403 high pressure direct injection engine, along with EGR, DOC and DPF technology, and excellent matching of hydraulic system provides high operating efficiency and fuel economy.
- Rexroth's improved load sensing hydraulic system ensures smoother operation, regardless of load size. It allows hydraulic oil to flow according to the specific range of the operator's lever motion. The result is greater fuel economy and smoother travelling.

Tight Tail Swing

This tight tail swing model and short slewing radius prove to be highly versatile when undertaking operations in a confined space. The left and right boom swing angle is respectively 70° and 53°, it can realize complex operation together with upper structure slewing to ensure that the digging is parallel with wall surface in narrow space through the cooperation of upper structure slewing so as to easily deal with various operating conditions.

Dozer blade swing

The dozer blade can swing to the left and right, which makes the machine operate more efficiently in confined space. And its left and right swing angle is 25° respectively.



Most compact one than ever.

Auxiliary hydraulics as standard fit with three ways lines

With one way high pressure quick coupler pipeline and two ways attachment pipelines with adjustable flow, it can provide more attachment options and the adjustable flow control allows user to operate more smoothly.

Boom and arm Anti-drop Valves as standard

The XE55E is fitted with a boom-lowering control device and a arm-lowering control device as standard.



Deluxe interior

Superior comfort to keep you productive throughout the work day

► Spacious & Comfortable

On the XE55E, your comfort truly comes first. The luxurious cabin features a deluxe seat and a wider entrance which enables easier entrance and exit to and from the cabin. The Rollover Protective Structure (ROPS) and Operator Protective Guard (OPG, ISO10262) maximize safety. Operability is greatly enhanced with more easy-to-use features than ever before.



- 1 Ample operator's space
- 2 Foldable walking pedal
- 3 Adjustable (suspension) seat
- 4 Bulldozer control handle
- 5 Shift switch
- 6 Air conditioner
- 7 Colorful monitor
- 8 Proportional joystick
- 9 Radio (DAB)
- 10 Adjustable arm support

► Simplest and easiest way to work

Although your XCMG excavator is state-of-the-art, its maintenance doesn't get much easier. Thanks to the full-opening rear and right side bonnets, engine, control valves and various components are accessible for easy inspection and repair.



One-sided Engine Maintenance

XCMG has made routine maintenance extremely simple by consolidating primary engine components onto one side for easier access. Engine and other vital components can be inspected quickly and easily.



- | | |
|---------------------|-------------------------|
| ① Fuel filter | ⑤ Air filter |
| ② Water separator | ⑥ Battery |
| ③ Engine oil filter | ⑦ Radiator & Oil cooler |
| ④ Coolant | |

■ Engine

XE55E	
Make/model	Kubota/V2403(EU Stage V)
Fuel/cooling	Diesel/Liquid, forced circulation
No. of cylinders	4
Piston displacement	2434cm ³
Nominal flywheel power	31.2 kw (41.8 hp) at 2200 rpm (ISO 14396)
Max torque	159.8Nm/1500
Bore × stroke	87mm×102.4mm
Alternator	12 V- 60A

■ Fluid capacities

XE55E	
Cooling system (radiator capacity)	12 l
Engine lubrication plus oil filter	9.5 l
Fuel tank	68 l
Hydraulic tank	46 l
Hydraulic system	41l
Final drive case (each)	1 l

■ Environment

Noise levels comply with environmental regulations (dynamic values).

• Noise emission

XE55E	
Noise level LpA (EU Directive 2000/14/EC)	79dB(A)
Noise level LwA (EU Directive 2000/14/EC)	96dB(A)

■ Undercarriage

Tractor-type undercarriage. Heavy-duty track frame, all welded stress-relieved structure. Top-grade materials are used for toughness. Side frames are welded, securely and rigidly, to the track frame. Lifetime-lubricated track rollers, idlers with floating seals. Hydraulic track adjusters with shock-absorbing recoil springs.

• Number of rollers and track shoes

XE55E	
Lower rollers (per side)	3
Track shoes	Rubber
Overall track length	2490mm
Shoe width	400mm



■ Hydraulic system

This original design enables both independent and combined operations of all functions, joystick control type operations.

• Pump

XE55E	
Type	Single outlet variable displacement, load sensing torque limited pump with piston pumps
Total hydraulic capacity	158.4l/min
Auxiliary flow	90l/min
Auxiliary relief 1/2	170bar

• Maximum system pressure

XE55E	
Boom	320bar
Arm / bucket / travel	320/320/2656bar
Swing	265bar

■ Swing mechanism

High-torque, axial piston motor with planetary reduction gear bathed in oil. Swing circle is single-row, shear type ball bearing with induction-hardened internal gear. Internal gear and pinion gear immersed in lubricant. A two position swing lock secures the upper structure for transportation.

• Swing system

XE55E	
Boom swing, left	70°
Boom swing, right	53°
Slew rate	9.5rpm

■ Drive

Each track is driven by an independent, high-torque, axial piston motor through planetary reduction gears. Two control levers provide smooth travel or counter-rotation upon demand.

• Speed & traction

XE55E	
Travel speed (low - high)	2.8-4.6km/h
Traction force	5280kgf
Gradeability	30°

■ Digging forces (ISO 6015)

At power boost.

XE55E	
Digging force, standard arm (ISO 6015)	24.3kN
Digging force, long arm (ISO 6015)	23.4kN
Digging force, bucket (ISO 6015)	44.5kN

■ Weight

XE55E	
Operating weight with cab and bucket(ISO6016)	5700kg
Ground pressure with rubber tracks	0.32kgf/cm ²
Transport mass (no attachment)	5626kg
Weight of steel tracks	310kg
Weight of rubber tracks	240kg
Additional weight for long arm	27kg

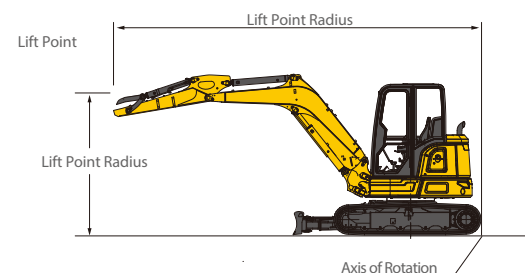
XE55E

■ Standard arm (1570mm)-standard counter weight- without bucket

Lift Point Height	Over Front					Over Side					Max Radius (Mm)
	Lift At Max Radius(Kg)	1.0m	2.0m	3.0m	4.0m	5.0m	Lift At Max Radius(Kg)	1.0m	2.0m	3.0m	
4m	1160*				1260		730			800	4198
3m	930				1250		580			790	4848
2m	810				1220	880	510			1150	5250
1m	810			1900	1180	860	500			1070	5242
0m	830		1990*	1760	1150	850	510		1900	1030	5075
-1m	940		3660	1750	1150		580		1910	1020	4637
-2m	1250		3300*	1770			760		1950	1040	3804

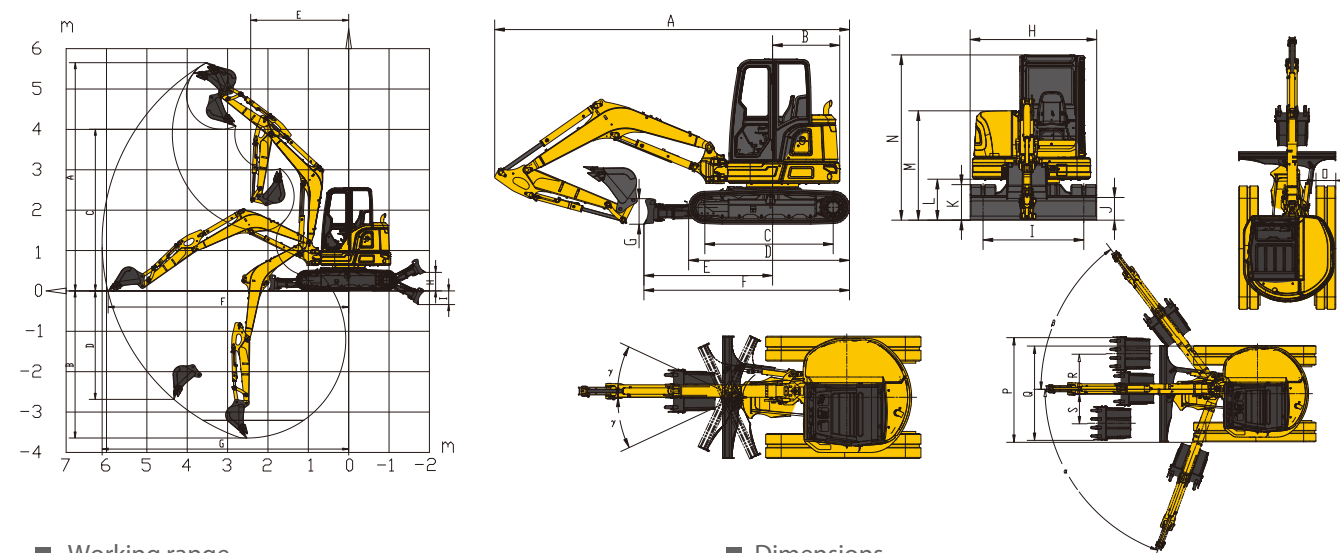
■ Long arm (1900mm)-standard counter weight- without bucket

Lift Point Height	Over Front					Over Side					Max Radius (Mm)
	Lift At Max Radius(Kg)	1.0m	2.0m	3.0m	4.0m	5.0m	Lift At Max Radius(Kg)	1.0m	2.0m	3.0m	
4m	1013				1272		641			809	4600
3m	839				1261		526			799	5188
2m	763			1920	1226	878	475			1170	5486
1m	739			1810	1181	859	457			1073	5553
0m	760		2078*	1746	1147	843	467		1853	1017	5397
-1m	840		3600	1728	1132		514		1863	1001	4994
-2m	1052		3646	1741			640		1898	1013	4254



■ : Over front
■ : Over side or 360°

1. The nominal forces are based on the SAE J1097 standard.
2. * = The nominal loads are based on hydraulic capacity.
3. The nominal loads do not exceed 87% of the hydraulic capacity or 75% of the capacity of the swing.



■ Working range

	XE55E
A	Maximum digging height - std arm
	Maximum digging height - long arm
B	Maximum digging depth - std arm
	Maximum digging depth - long arm
C	Maximum dumping height - std arm
	Maximum dumping height - long arm
D	Maximum vertical wall digging depth - std arm
	Maximum vertical wall digging depth - long arm
E	Minimum swing radius - std arm
	Minimum swing radius - long arm
F	Maximum digging reach at ground level - std arm
	Maximum digging reach at ground level - long arm
G	Maximum digging radius - std arm
	Maximum digging radius - long arm
H	Maximum dozer lifting height
I	Maximum dozer cutting depth

■ Dimensions

	XE35E
A	Overall length
B	Tail slew radius
C	Tumbler length
D	Track length
E	Dozer blade, maximum reach at ground level
F	Undercarriage length
G	Dozer blade height
H	Overall width
I	Track gauge
J	Minimum ground clearance
K	Track height
L	Ground clearance of counterweight
M	Overall height of engine hood
N	Overall height
O	Track shoe width
P	Working width at maximum right-hand rotation
Q	Working width at maximum left-hand rotation
R	Maximum boom offset to the right
S	Maximum boom offset to the left
a	Maximum boom swing angle to the right
β	Maximum boom swing angle to the left
γ	Maximum dozer blade swing angle

➤ Standard and optional equipment

■ Engine

Kubota engine V2403, EU Stage V, EGR, DOC, DPF

■ Hydraulic system

Single or dual way pipeline (AUX1)
Dual way pipeline (AUX2)
Hydraulic quick coupler line
Proportional joysticks control

■ Cab & interior

TOPS/ OPG cab
Adjustable seat
Textile and permeable suspension seat with retractable belt
Air conditioning
Colorful LCD monitor
AM-FM radio with digital display
DAB radio with Bluetooth

■ Safety

Boom, arm and dozer cylinder safety valves
Travel alarm
Rotation beacon
Engine overheat warning and restart prevention system
Quick coupler switch with alarm
Emergency stop switch
Front and top cab protection
LED work lights (2 on cab-front, 1 on cab-rear, 1 on boom)

■ Undercarriage

Fixed undercarriage
Slewing dozer blade
Track guards
Rubber tracks 400 mm
Steel tracks 400 mm

■ Other

Standard arm 1570 mm
GP bucket 0.16 m³
Long arm 1900 mm
Narrow bucket 0.07 m³
Quick coupler, attachments such as hammer, clamshell

Standard: ●
Optional: ○

Some of these options may be standard in some markets. Some of these options may not be available for certain markets. Please check with your local XCMG dealer for more information about availability or to adapt your machine to your application needs.





Optimum services , XCMG Guaranteed



XCMG approved attachments



Genuine parts



Extension of warranty



Financial solutions



Maintenance contract



Telematics



Monitoring systems

Professional Integrated Complete Solutions

XCMG group has built a strong reputation based on the quality, reliability and durability of its construction machinery. What's more, XCMG has gradually established a service network to constantly provide its local integrated and highly efficient complete solutions for all users.

Full range of services ready for you

In order to respond to your needs as fast as possible, XCMG experts are on their way to your job site from one of our facilities near you. Full range of services are available in order to reduce your total cost of ownership and increase your revenue.



XCMG Global Spareparts System



Mobile cranes



Excavators



Aerial work platforms



Wheel loaders



Road machinery





 @mrplanthireuk  mr_plant_hire  @mrplanthireuk  @mrplanthireuk
Head office: 120 Hertford Road, Enfield EN3 5AX | e: info@mrplanthire.co.uk

SCAN ME TO DOWNLOAD THE MPH APP
EQUIPMENT INVENTORY | SPECIFICATIONS
TUTORIALS | TRAINING | SUPPORT

020 8351 3434